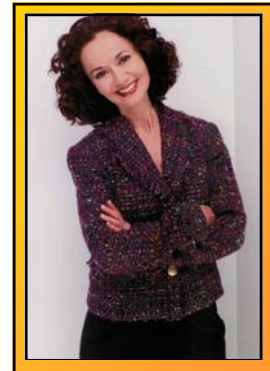


MAGICAL MEETING HOSTS



JAN ROSE & DANNY ORLEANS: A UNIQUE MAGICAL TEAM

Teamwork is the key to success in the business world. That's why the magical duo of Jan Rose and Danny Orleans is a popular choice to host corporate meetings. They add a magical touch to your meeting, while they keep your speakers, your theme, and your brand on center stage.



*Corporate Meeting Magicians
Jan Rose and Danny Orleans*

MEETING HOSTS

Having a series of speakers at your meeting? Jan Rose



A trick with a giant dollar bill is a great way to introduce your CFO.

and Danny Orleans

have just the trick to introduce each one (and break up the series of ho-hum PowerPoint presentations). Between each presenter, they interact with the audience, performing a brief magical routine adding humor, mystery and interactivity. This gives your attendees a mental break, and prepares them for the next presentation. Each routine is built around the speaker's position or topic.

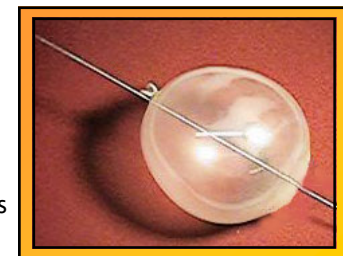
Here are a few examples:

IMAGINATION — If your conference has a presenter who's a creative thinker or innovator, Danny and Jan will introduce him or her by testing the imagination of the audience. The prop? An invisible deck of cards. Someone picks an imaginary card from the imaginary deck. Then the test goes from the hilarious to the amazing. What happens? The deck materializes out of thin air, and the card that the spectator is thinking of turns out to be the *only one* reversed in the pack!



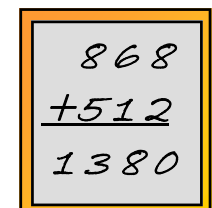
A card imagined by an attendee magically appears - upside down in the deck!

DOING THE IMPOSSIBLE — Has one of your speakers achieved incredible results in sales, marketing, or cost reduction? Jan and Danny can illustrate the achievements with a physical impossibility. A balloon is inflated and then skewered with a sharp knitting needle. But it doesn't pop! The routine celebrates his or her "impossible" achievement.



A needle penetrating a balloon illustrates the "impossible" achievements of your company.

IT ALL ADDS UP— Can Jan Rose solve a math problem without even looking at the numbers? After some spectators create a math problem that Jan can't possibly see, she magically gives the solution. What a nice way to introduce a speaker who's reporting on the financials of your company, has come up with a unique solution, or achieved record sales figures.



Adding the numbers, magically



YOUR CEO – OUT OF THE BOX

Need a great way to introduce your CEO or a surprise guest speaker? “Out of the Box” is the perfect magical illusion. The audience thinks that the magician is letting them in on a secret as he shows them the hiding place of his female assistant. But the tables are turned when she suddenly disappears — and in her place is your CEO! How does it work? The magic succeeds for the same reasons any business succeeds: Preparation, communication and teamwork. A great choice to kick off a meeting or introduce a presenter.



At the Tennant National Sales Meeting, Company CEO, Chris Killingstad, magically appears.



Safari to the Jungle — Jan Rose reads the minds of three McDonald's accountants at a corporate meeting in Oakbrook headquarters.

YOUR STAFF ON STAGE

Watch your colleagues participate on stage! When Jan Rose invites three volunteers to join her on a “safari to the jungle,” the hilarity gets underway. She asks each one, “If you could have the qualities of any jungle animal to improve your job performance, what animal would you be? Don’t tell me. Just think of it.”

In an intriguing game where *To Tell the Truth* meets *What’s My Line*, the audience plays along as Jan determines the liars from

the truth tellers and guesses which animal each person is thinking of. Does she have super-intuition or can she read minds? Watch for yourself and you be the judge!

CORPORATE BINGO

Trying to build brand loyalty or roll out a new product or program? Corporate Bingo is just the trick. Everyone gets a Bingo Card (which might be customized with your company’s name). But instead of shouting “BINGO” when they get 5 squares in a row, they are instructed to yell out the name of your

B I N G O				
2	17	31	46	62
3	19	35	51	64
5	21	FREE	52	65
8	23	37	53	67
9	24	39	54	68

Corporate Bingo: Everyone’s a winner!

company. What happens? They don’t know it, but the game is rigged. Despite the fact that everyone’s Bingo card is different, they all win at the same time.

The result? A roomful of people, all on their feet, shouting your company’s name simultaneously — and everyone’s a winner!



Corporate Bingo: Who will win the bowl full of cash?